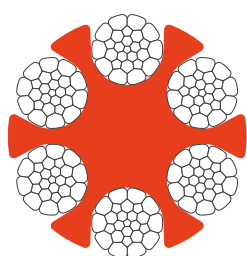


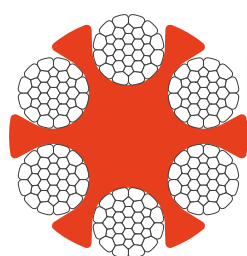
Whisper®

A new breed of ropeway rope that reduces vibration and noise levels

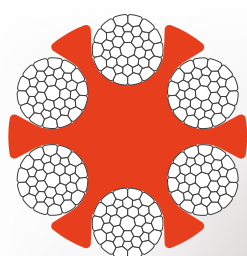
The outer circumference of **Whisper®** offers a smooth interface between the rope and sheaves, clamps and rollers.



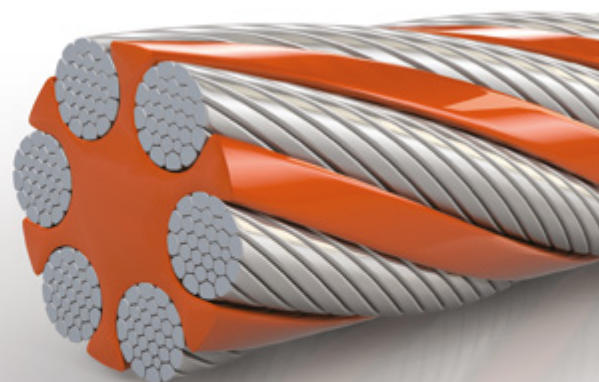
Whisper®
6x26WSR



Whisper®
6x31WSR



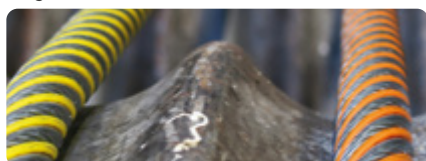
Whisper®
6x36WSR



Features	
›	Compacted strand.
›	Wire class compositions from 1770 to 2160 MPa.
›	Splice.
›	Pitch length remains unchanged.
›	With CE certification, the Whisper® splice is specially developed to optimise its lifespan.
›	The double-buffed strands provide a lifespan that extends far beyond a standard splice.
›	Controlling the inner-strand space reduces the contact forces between wires.

Benefits

- › Suitable for track/hauling ropes.
- › The core fins fill the inter strand spaces to improve comfort of use and operation.
- › Enhanced resistance and lifespan due to compacted strand (lifetime of spliced loop 30% longer than a standard cable).
- › Adapts to your existing systems.
- › Significant reduction in maintenance costs.
- › Bandage wear less on a conventional cable.
- › Whisper® is recommended for use on intensive use equipment that operates 24/7, especially for urban or mountain region rope transport systems.
- › Significant reduction of noise.



Composition	Diamètre mm	Section mm ²	Masse Kg/m	Charge minimale (Kn)
	mm	mm ²	Kg/m	Kn
6x26WSR	30	366	3,3	675
6x26WSR	32	416	3,7	768
6x26WSR	34	470	4,2	867
6x26WSR	36	527	4,7	972
6x26WSR	38	587	5,2	1084
6x26WSR	40,5	656	5,9	1211
6x31WSR	42	702	6,3	1299
6x31WSR	44	770	6,9	1426
6x31WSR	46	842	7,5	1558
6x31WSR	48	916	8,2	1697
6x31WSR	49	975	8,7	1806
6x31WSR	50	994	8,9	1841
6x36WSR	52	1074	9,7	1996
6x36WSR	54	1158	10,5	2151
6x36WSR	56	1245	11,2	2313
6x36WSR	58	1335	12,1	2475
6x36WSR	60	1429	12,9	2617
6x36WSR	62	1526	13,8	2779
6x36WSR	64	1626	14,7	2953

Values are indicative for guidance only

Please note: Other diameters with other tolerances than those illustrated can be manufactured on request.
Indicative values. The tolerance value for each table is 0 / + 4% under 10 to 20% of MBL.

Applications



Properties

